

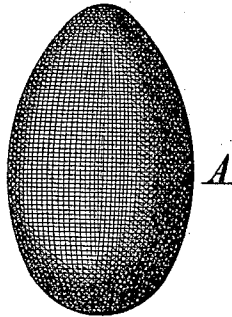
(No Model.)

B. WILMSEN.  
EASTER EGG.

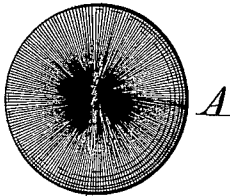
No. 419,391.

Patented Jan. 14, 1890.

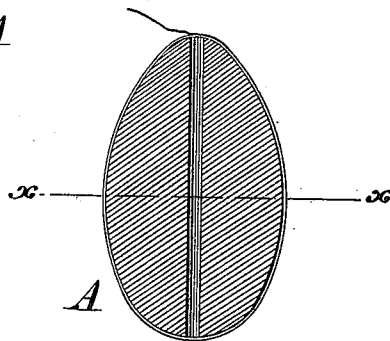
*Fig. 1.*



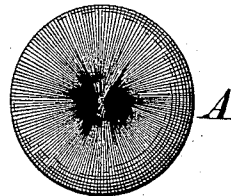
*Fig. 4.*



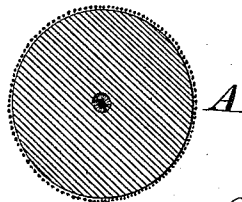
*Fig. 2.*



*Fig. 5.*



*Fig. 3.*



WITNESSES:

*P. H. Hagel.*  
*A. P. Jennings.*

INVENTOR:  
*Bernhard Wilmsen,*  
BY *Niedersheim & Junner*  
ATTORNEYS.

# UNITED STATES PATENT OFFICE.

BERNHARD WILMSEN, OF PHILADELPHIA, PENNSYLVANIA.

## EASTER-EGG.

SPECIFICATION forming part of Letters Patent No. 419,391, dated January 14, 1890.

Application filed March 5, 1889. Serial No. 301,866. (No model.)

*To all whom it may concern:*

Be it known that I, BERNHARD WILMSEN, a citizen of the United States, residing in the city and county of Philadelphia, State of Pennsylvania, have invented a new and useful Improvement in Easter-Eggs, which improvement is fully set forth in the following specification and accompanying drawings.

My invention consists of an Easter-egg formed of a body with silk or other thread or yarn wound thereon in such manner as to conceal the surface of the body and cover the openings in the body primarily therein, the ends of the thread being fastened, thus presenting the appearance of a solid body of such thread.

Figure 1 represents a side elevation of an Easter-egg embodying my invention. Fig. 2 represents a longitudinal section thereof. Fig. 3 represents a transverse section on line  $x x$ , Fig. 2. Figs. 4 and 5 represent views of the point and butt end of the egg.

Similar letters of reference indicate corresponding parts in the several figures.

Referring to the drawings, A designates an Easter-egg which is formed of a block of wood turned into the shape of an egg and thread or yarn wound thereon, the same being preferably spun silk.

In the manufacture of the Easter-egg the block is dyed or colored, so that the block would present the same appearance as the threads in case of the displacement of the covering-threads, and a pin passed through a longitudinal opening in the block, whereby the latter may be held during the operation of winding the thread thereon. After the block is completely covered the pin is re-

moved, and crossed threads which have gathered around said pin at the point and butt are drawn over the opening, thus covering and concealing the same. The end of the thread at the point end is secured to the contiguous threads by means of a small quantity of glue, cement, paste, &c., or other means, whereby the thread is prevented from unwinding, it being seen that an attractive, inexpensive, and serviceable article is produced for the purpose intended.

Having thus described my invention, what I claim as new, and desire to secure by Letters Patent, is—

1. An Easter-egg formed of a block of the shape of an egg with an opening therein and thread wound thereover, covering the block and stretched over said opening, the end of the thread being secured to the contiguous portion thereof, substantially as described.

2. As a new article of manufacture, an Easter-egg consisting of a block of the form of an egg and having a coating of dye or paint and a covering of thread of the same color as the coating, substantially as described.

3. As a new article of manufacture, an Easter-egg consisting of a block of the form of an egg and having an opening therein, a coating of paint or dye on the outer surface thereof, and a covering of threads, the said threads crossing at the ends of the block and being secured at said openings, substantially as described.

BERNHARD WILMSEN.

Witnesses:

JOHN A. WIEDERSHEIM,  
A. P. JENNINGS.